



Kasa Smart Wi-Fi Light Bulb

Multicolor



KL130

-  Multicolor
-  No Hub Required
-  Control From Anywhere
-  Voice Control
-  Auto White

Highlights

Multicolor

Kasa Smart's Multicolour light bulb offers endless lighting possibilities to create the perfect ambiance from anywhere with a wide range of colours and dimming capabilities. Schedule your lights to change to your favourite teams' colours on game night or dim them to subtle reds and purples for a romantic dinner. Control your lights from anywhere using the Kasa Smart app or with simple voice commands via Google Assistant, Alexa or SmartThings.



*The app screen depicted is for visual reference only and does not necessarily represent actual product operation or app appearance.

*Alexa, Google Assistant, and SmartThings are not available in all languages and countries.

Multi-scene

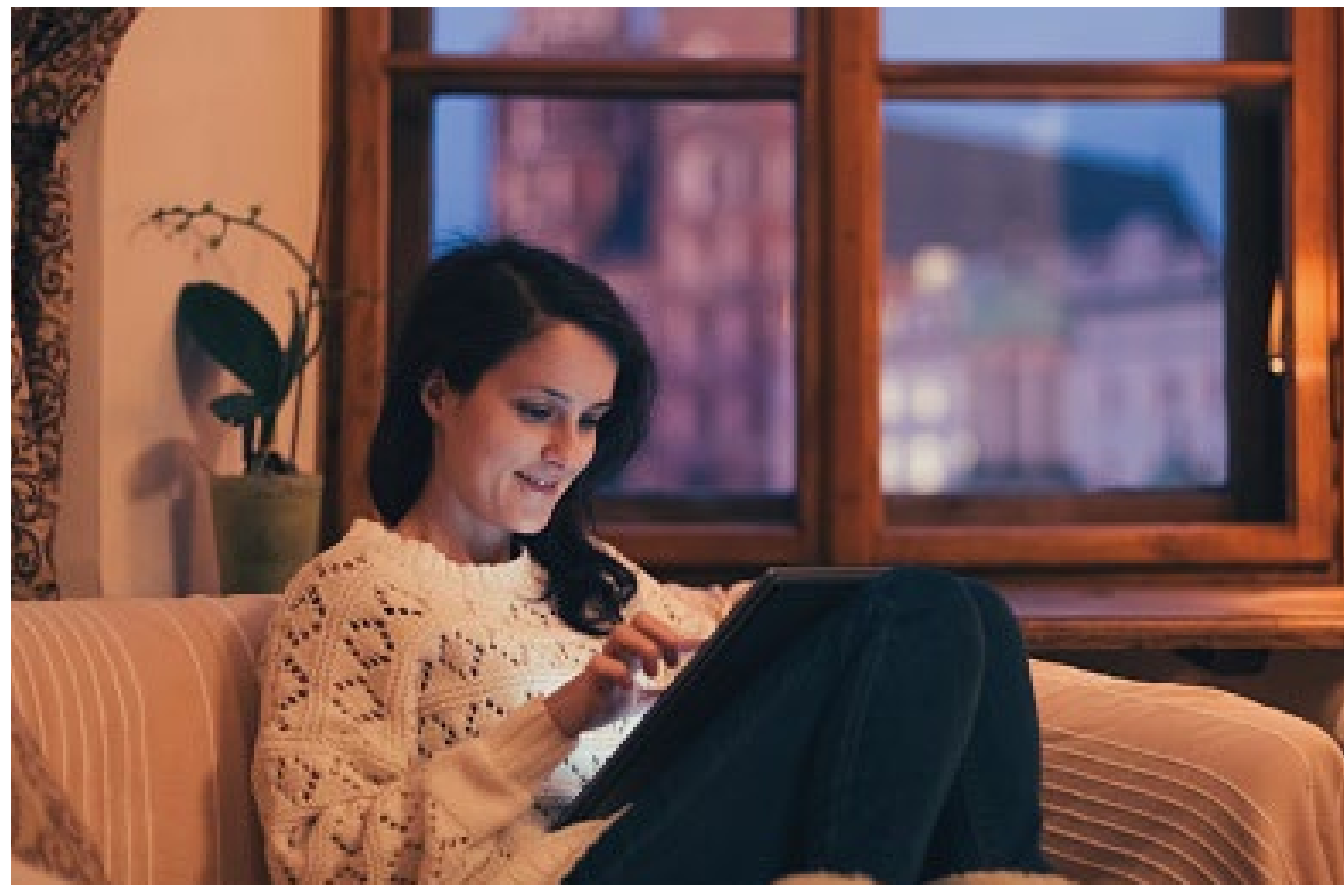
Create multiple scenes like theater scene, party scene or sleeping scene with different settings for various occasions, and tap yours when you want the light your way.



Highlights

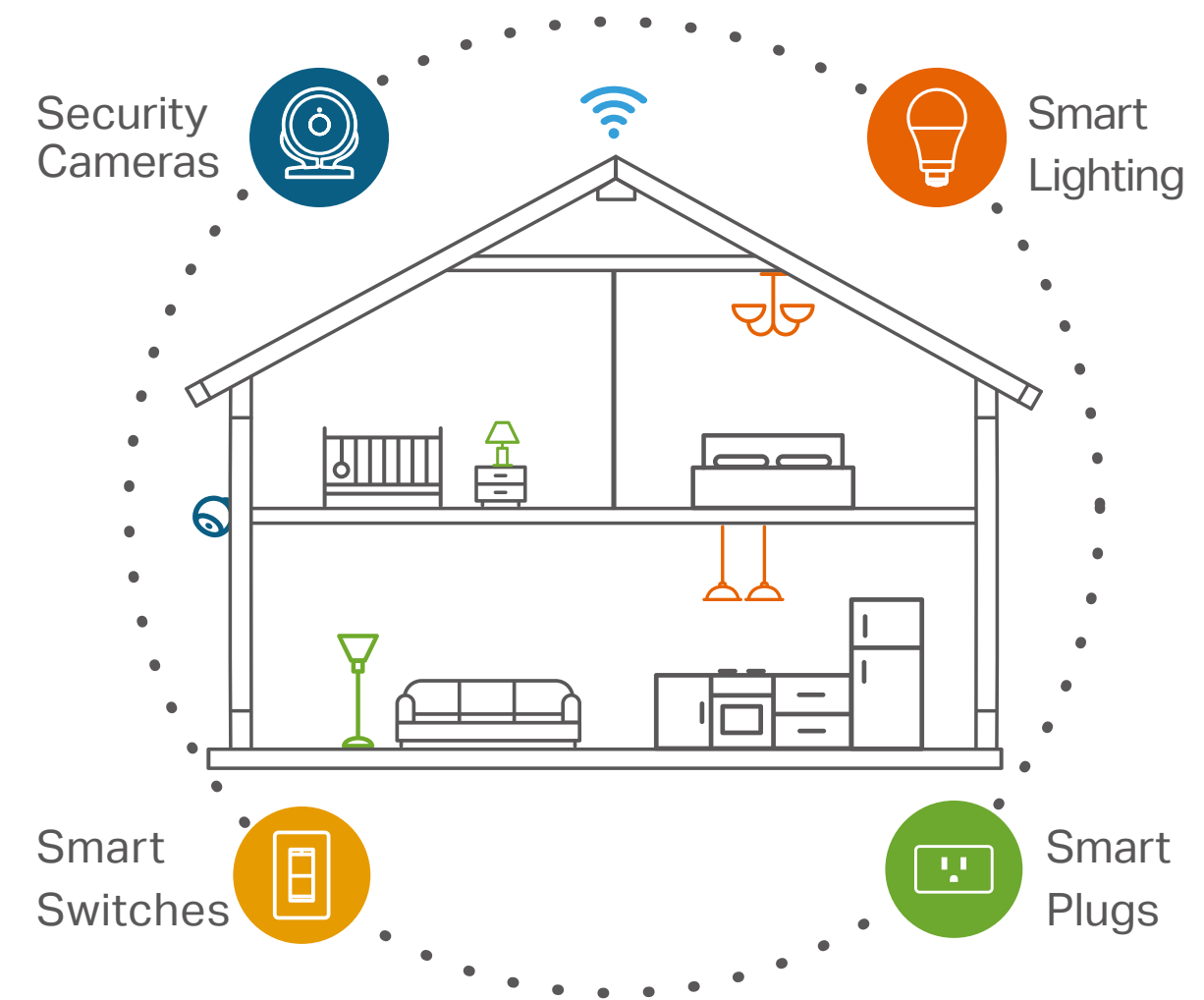
Schedules

Use your Kasa Smart app to schedule your light bulb to automatically switch on and off when you're home or away.



Your Home. One App.

Turn your home into a true smart home with Kasa Smart. Automate your lights and appliances with smart plugs, bulbs, and switches. Secure your home with Kasa Cameras. Control it all from the Kasa Smart app.



Learn more at [KasaSmart.com](https://www.kasasmart.com)

Features



Ease of Use

- No Hub Required – Connect to your home’s secure Wi-Fi network. No need for a hub or extra equipment
- Remote Control – Control your smart light bulb from anywhere with your smartphone using the free Kasa app
- Scheduling – Set schedules to turn on/off the smart bulbs at any chosen time for your convenience
- Multi-scene – Save your light settings as different scenes to enjoy instant access to them
- Smart Actions – With Smart Actions, your Kasa devices can work together to create a smarter smart home
- Grouping - Use Grouping to combine your Kasa devices with other Kasa Smart devices for seamless control with one single tap on your smartphone



Compatibility

- Works with Voice Assistants – Control smart bulbs using the leading voice assistants such as Amazon Alexa, Google Assistant or SmartThings
- Compatible with Android, iOS – The free Kasa app lets you run smart bulbs from any Android or iOS devices



Lighting

- Multicolor – Choose a different color for any occasion
- Auto White – Set your bulb to automatically adjust its colour temperature to match natural light patterns from dawn to dusk
- Durable Bulb – Provide you stable and customized lighting for up to 22.8 years**

*60W equivalent

**Based on 3hrs/day

Specifications

Working Status

- Typical Lumen Output: 850 lumens (60 W equivalent)
- Input Power (Actual power draw in Watts): 8.8 W
- Color Temperature: 2500 K ~ 9000 K (adjustable via app and cloud)
- Rated Input Voltage: 120 V~, 60 Hz
- Beam Angle: 220 degrees typical
- Switching Cycles: 15000
- Color Rendering Index: CRI ≥ 88
- Dimmable: Yes (via app and cloud only)
- Tunable: Yes (via app and cloud only)
- Color Changing: Yes (via app and cloud only)
- Lifetime: 25000 H

Network

- Wi-Fi Protocol: IEEE 802.11 b/g/n
- Wi-Fi Frequency: 2.4 GHz
- Secured home Wi-Fi connection required
- Free Kasa Smart app and account required

General

- Package Contents:
 - Kasa Smart Light Bulb
 - Quick Start Guide
 - Lamp Base: A19 bulb, E26 fitting
 - Weight: 0.27 lb (123g)
 - Dimensions: 2.36 x 4.65 in (60 x 118 mm)
 - Certifications: FCC, UL, DoE, California Energy Commission (CEC), Title 20 Compliant
 - Operating Temperature: -15 °C~ 40 °C (5 °F ~ 104 °F)
 - Operating Humidity: 10%~90% RH, Non-condensing
- FOR INDOOR USE ONLY

Others

- Compatible with regular light switches. Do not use with standard dimmers.
- Not compatible with photosensors, motion sensors, or timers.
- Not for use in totally enclosed or recessed luminaires.
- Suitable for damp locations.
- NOT FOR EMERGENCY LIGHTING